

2020

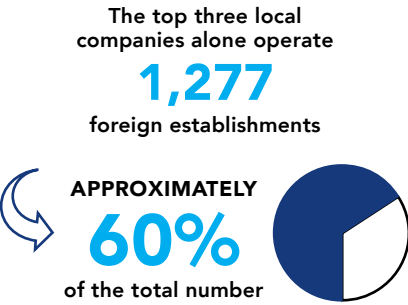
THE GLOBAL REPORT



Columbus Council
on World Affairs

ECONOMY

32 local companies operate 2,125 establishments in more than 90 countries around the world



TOP 5 local firms by number of foreign countries with establishments

Vertiv Company	55
Limited Brands, Inc.	37
Mettler-Toledo International, Inc.	35
Greif Inc.	33
The Wendy's Company	31

TOP 5 countries with the most local companies present

Canada	688
United Kingdom	120
Philippines	88
Mexico	74
India	71

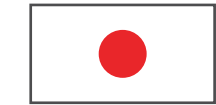
TOP 15 local companies with global establishments

LOCAL COMPANY	HEADQUARTER	COUNTRIES	EST.
The Wendy's Company	Dublin	31	633
Limited Brands, Inc.	Columbus	37	605
Abercrombie & Fitch Co.	New Albany	23	219
Sbarro, LLC	Columbus	22	205
Vertiv Company	Columbus	55	134
Greif, Inc.	Delaware	33	72
Mettler-Toledo International, Inc.	Columbus	35	60
Hexion, Inc.	Columbus	21	47
Cardinal Health, Inc.	Dublin	12	36
Bry-Air, Inc.	Sunbury	8	16
Online Computer Library Center, Inc. (OCLC)	Dublin	11	15
The Scotts Miracle-Gro Company	Marysville	13	13
Commercial Vehicle Group (CVG)	Hilliard	6	9
ADS (Advanced Drainage Systems, Inc.)	Hilliard	6	9
Worthington Industries, Inc.	Columbus	5	8

TOP 10 foreign-owned firms by local employment

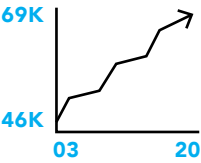
1. Honda of America Manufacturing
 2. West-Ward Pharmaceuticals Corp
 3. Accenture LLP
 4. Cardington Yukata Technologies
 5. BMW Financial Services
6. Anheuser-Busch, LLC
 7. TS Trim Industries, Inc.
 8. Farmers Insurance of Columbus, Inc
 9. TS Tech USA Corporation
 10. Jefferson Industries Corporation

JOBS **24,000** PEOPLE IN THE METRO AREA ARE EMPLOYED BY FOREIGN OWNED COMPANIES



Japanese companies employ over 12,000 Columbus-area employees

Goods and services exports support a combined **69,740 jobs** in the metro area, an increase of 51% since 2003.



Goods exports total value: **\$5.9 BILLION**

Services exports total value: **\$4.8 BILLION**

The total value of exports is **\$10.7 BILLION**

In just one year, THAT'S A **6%** increase from 2016 to 2017

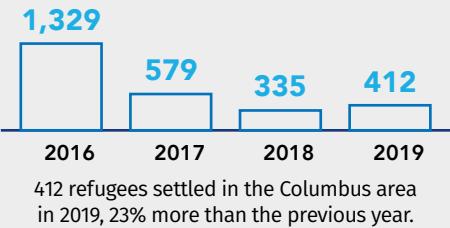
PEOPLE



More than 20 Columbus organizations have participated in Global Fluency Training, developing cultural competency skills in the local workforce.



37% of population growth in the metro area from 2017-2018 came from international migration

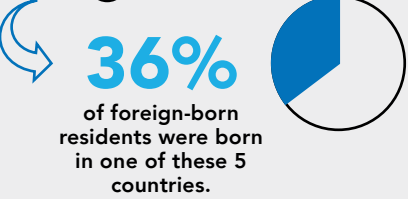


- TOP 3 countries of origin for refugees
1. Democratic Republic of Congo
 2. Eritrea
 3. Ukraine

Nearly **190,000** Columbus metro area residents are foreign-born.

In 2010 only 7% of the Columbus Metro area population was foreign-born, compared to 9% in 2018. In just one year (from 2017 to 2018) the number of people who are foreign-born has increased by 15%.

- TOP 5 countries of origin for immigrants
1. India
 2. Mexico
 3. China
 4. Somalia
 5. Ghana



EDUCATION



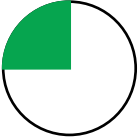
Over 1,000 central Ohio students are working towards a 3-year global credential through the Global Scholars Diploma program, developing the knowledge, skills, and mindset to thrive in a globally-interconnected society.

PK-12 SCHOOLS



More than 90 different languages are spoken in the homes of Central Ohio students.

25% of all pre-K through 12th graders are enrolled in a foreign language course.



- WORLD LANGUAGES Spoken at Home Studied at School
1. Spanish
 2. Somali
 3. Arabic
1. Spanish
 2. French
 3. German

UNIVERSITIES



Over 3,000 students studied abroad in 87 countries. 13% studied in multiple countries.



43% of foreign-born residents hold a bachelor's degree or higher. That is a 12% increase since 2010.

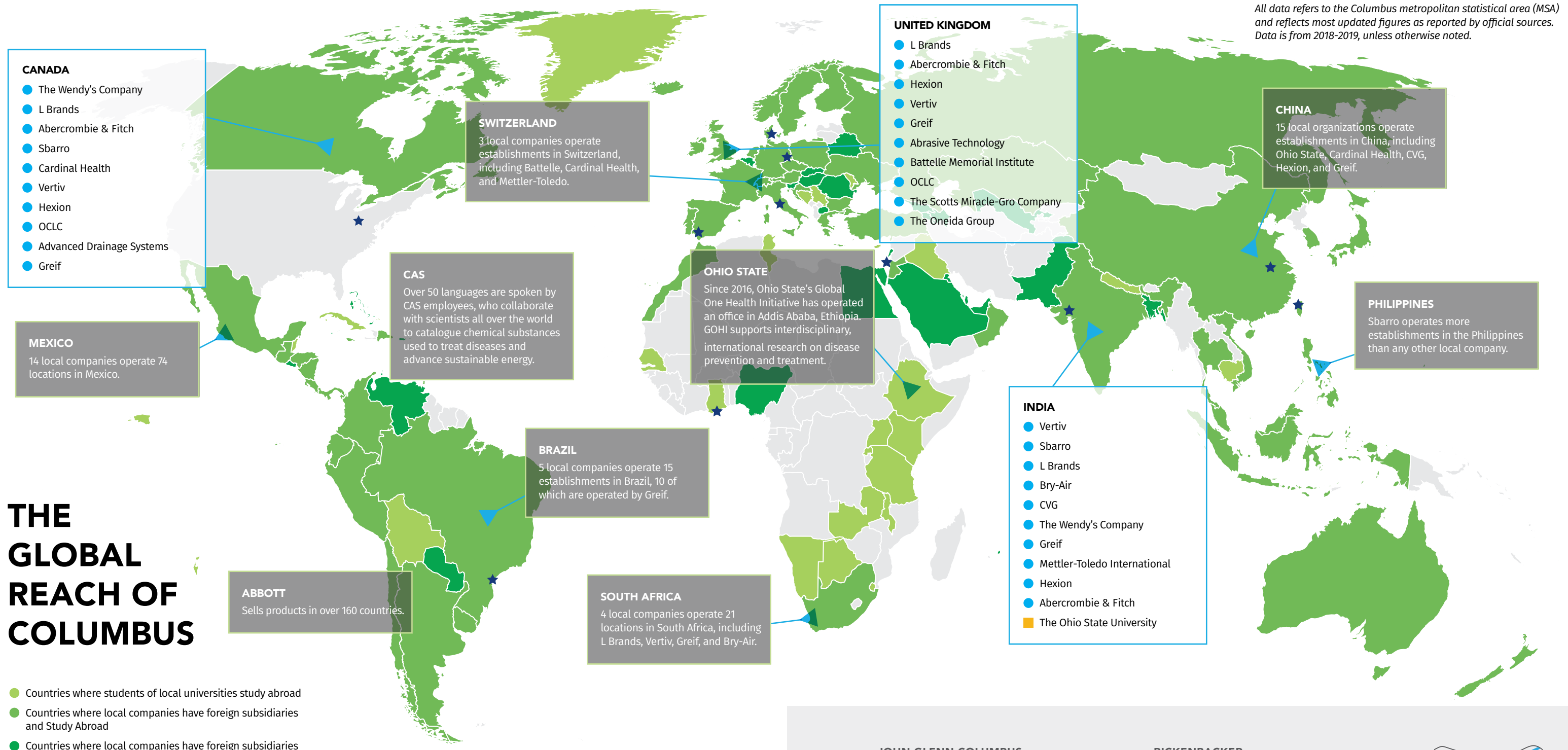
Over 9,000 international students from 40 countries contributed an estimated \$350 million to the local economy in 2018.

- TOP 5 countries of origin for international students

 1. China
 2. India
 3. South Korea
 4. Malaysia
 5. Taiwan
- TOP 5 study abroad destinations

 1. United Kingdom
 2. Spain
 3. Italy
 4. France
 5. Brazil

THE GLOBAL REACH OF COLUMBUS



All data refers to the Columbus metropolitan statistical area (MSA) and reflects most updated figures as reported by official sources. Data is from 2018-2019, unless otherwise noted.

UNIVERSITIES with partnerships or offices outside of the U.S.

THE OHIO STATE UNIVERSITY Argentina / Australia / Botswana / Brazil / Canada / China Colombia / Ethiopia / Finland / France / Germany / India / Indonesia / Italy / Japan / Mexico Moldova / Poland / Rwanda / Spain / South Korea / Taiwan / Tanzania / Tunisia / Ukraine United Kingdom

COLUMBUS COLLEGE OF ART AND DESIGN China / Chile / United Kingdom

FRANKLIN UNIVERSITY China / El Salvador / France / Oman / Poland / Serbia / South Korea Trinidad & Tobago

OTTERBEIN UNIVERSITY China

PONTIFICAL COLLEGE JOSEPHINUM Italy

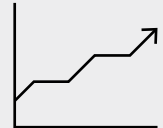
GREATER COLUMBUS SISTER CITIES

Accra, Ghana / Ahmedabad, India / Curitiba, Brazil / Dresden, Germany / Genoa, Italy Hefei, China / Herzliya, Israel / Odense, Denmark Seville, Spain / Tainan City, Taiwan

JOHN GLENN COLUMBUS INTERNATIONAL AIRPORT

Over 1,100 passengers fly internationally from John Glenn Columbus International Airport (CMH) daily

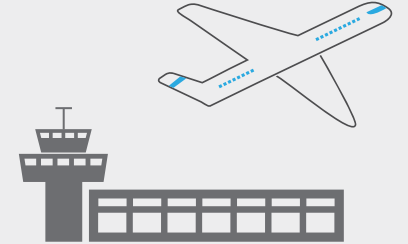
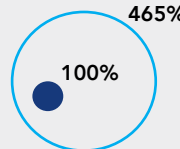
CMH has seen a **20%** growth in international passengers in only 2 years



RICKENBACKER INTERNATIONAL AIRPORT

Over 169 million pounds of international air cargo flowed through Rickenbacker International Airport (LCK) in 2019.

International air cargo tonnage is up **465%** over the last 5 years.



The Columbus-based Foreign-Trade Zone (FTZ) received \$10.4 billion of merchandise from international origin countries in 2018, ranking it among the Top 10 FTZs in the country for the seventh year in a row.

THANK YOU!



columbusregion.com



franklincountyohio.gov



columbus.gov



columbusairports.com

Thanks to our Mission Partners



PROJECT RESEARCHER & REPORT AUTHOR

Zwickl Consulting, LLC

CONCEPT & DESIGN



ibelagency.com



The Columbus Council on World Affairs is a proud member of the World Affairs Councils of America, the largest national non-partisan network of nearly 100 councils in over 40 states that is dedicated to educating and engaging Americans on the critical global issues of our times.



**Columbus Council
on World Affairs**

Columbus Council on World Affairs
51 Jefferson Avenue
Columbus, Ohio 43215
columbusworldaffairs.org